

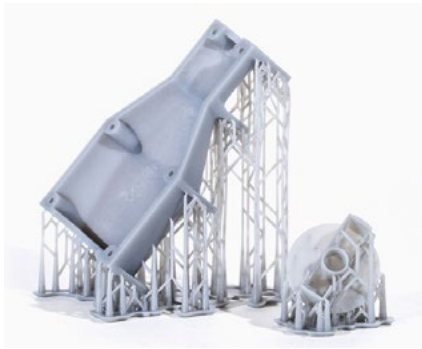
Professional Services



3D HUBS

Place an Order Online

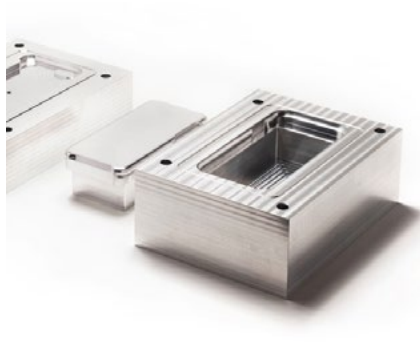
Get an instant quote & order parts online in less than 5 minutes for the following technologies.



3D Printing

FDM, SLA/DLP, SLS, Material Jetting, Binder Jetting, DMLS/SLM

[Request a quote →](#)



CNC Machining

CNC milling (3-, 4-, 5-axis), CNC turning (lathe), Mill-turning

[Request a quote →](#)



Injection Molding

Thermoplastic & silicones, overmolding, gas assisted

[Request a quote →](#)

Other Available Solutions

Request a quote through your Account Manager for the following technologies.

2D Profile Cutting

Laser, Water-Jet & Plasma

Sheet Metal

Bending & Punching

Vacuum Casting

Rubber & soft plastics

EDM

Die-sink, hole drilling & wire-cutting

Metal Extrusion

Aluminum profiles

Tube Bending

Simple forms

Vacuum Forming

Thermoplastics

Die & Investment Casting

Aluminum & mild steels

Additional Manufacturing Services

Certifications

ISO 9001, RoHS, Material certificates

Expedited production

As fast as 5 days lead time for CNC machining and 2 days for 3D Printing

Assembly

Welding, fastening, fitting, off-the-shelf components

Custom solution

Contact your account manager about your special requirements

Financial Services

Credit terms for certified businesses

NET30 or 50% down payment

Design Verification Programme

Premium first article inspection for productions of 100+ units

Blank Purchase Orders

Pre-pay for future orders

[Contact us](#)

CNC Capabilities



3D HUBS

Materials

Aluminum

2014, 2017, 2024
5052, 5754, 5080, 5083
6061-T6, 6061-T651, 6063, 6082
7050, 7075, 7075-T6
A380, MIC6

Other Metals

Magnesium AZ19D, AZ31B, AZ80, AZ91B
Bronze/Copper, Beryllium/Copper
Brass, Bronze, Copper, Red Copper
Titanium Grade 5
Inconel 718
Invar

Other Steels

Q235B, Q345A
M2, M303E, P20, Spring steel
CRS, SGCC, SPCC, SPHC

Stainless Steel

301, 303, 304, 304L, 316, 316L
416, 420, 430, 440C
15-5, 17-4
2205 (Duplex)

Plastics

POM, PC
ABS, ABS+PC (30%)
Nylon 6, Nylon+GF (30%), Nylon+PC (30%)
HDPE, PE, UHME-PE
PEEK, PEI, ULTEM,
PI, PAI
PTFE, Teflon

Mild, Alloy & Tool Steels

1018, 1020, 1045
1214, 1215
A36, A1011
4130, 4140, 4340
A1, A2, A3, D2, H13, O1, S7

Plastics (cont.)

PET, PVC
PMMA (Acrylic)
PP, PP+GF (20%)
PPE, PPO, PPE+PPO, PPS, PSU
PBI, PBT, PES
Bakelite, Carbon fibre, Fiberglass
Epoxy Tooling Board, FR4, UL 94-V0

[Start Manufacturing →](#)

Finishes

Surface finishing

Sand blasting
Glass bead blasting
Brushing, Smoothing
Vapour polishing
Electropolishing

Anodizing

Type II (clear or colored)
Type III (hardcoat)

Plating

Nickel, Zinc, Tin, Copper,
Brass
Silver, Gold
Electroless Nickel or Copper
Teflon Impregnated
Electroless Nickel

Painting

Powder coating
Metallic spray painting
Plastic spray painting
Rubber oil painting
UV oil painting

Other finishes

Chromate coating/conversion
Alodine, Chem Film
Black oxide coating
UV protection coating
Teflon coating
Physical vapor deposition
Gilding (gold film)

Certifications

ISO 9001, Material certificates, RoHS

[Upload your file and get your instant quote →](#)

Standard Technical Capabilities

Dimension	Tolerance	Angularity
< 12" (30 cm)	± .005" (0.125 mm)	± 0.5°
< 24" (60 cm)	± .010" (0.250 mm)	± 1.0°
< 36" (90 cm)	± 1/64" (0.400 mm)	± 1.0°

Tightest tolerance

± .0008" (0.020 mm) Tighter tolerances are examined on a case by case basis.

Surface roughness

Standard	Smoothest finish
RA 3.2 µm (125 µin)	RA 0.25 µm (10 µin)

Size limitations

Max. part size	Min. part size	Min. diameter
1000 mm (40 in) *	0.5 mm (0.02 in)	∅ 0.30 mm

* Larger parts are reviewed on request.

3D Printing Capabilities



3D HUBS

Processes & Materials

FDM

For quick, low-cost prototyping

Price: \$

Turnaround: < 2 days

Materials:

PLA, ABS, ASA, PETG, TPU
Nylon, Carbon-filled Nylon
Carbon-fiber reinforced Nylon
PEI (ULTEM)

Material Jetting

For best visual appearance

Price: \$

Turnaround: < 2 days

Materials:

Standard resin, Transparent resin
Rubber-like resin

SLS

For functional parts & prototypes

Price: \$\$\$

Turnaround: < 5 days

Materials:

Nylon (PA12), TPU
Glass-filled Nylon
Aluminum-filled Nylon

DMLS/SLM

For high-performance metal parts

Price: \$

Turnaround: < 2 days

Materials:

Stainless steel 316
Aluminum

SLA/DLP

For high-detail prototypes

Price: \$\$

Turnaround: < 2 days

Materials:

Standard resin, Clear resin
Tough resin, Durable resin
Rubber-like resin

Binder Jetting

For metal batch-production

Price: \$

Turnaround: < 2 days

Materials:

Stainless steel 316 (sintered)
Stainless steel 316 (bronze-filled)

[Start Manufacturing →](#)

Standard Technical Capabilities

Process	Min. Thickness	Layer Height	Max. Build Size	Tolerances
FDM	0.8 mm	20 - 400 μ m	100 x 100 x 100 cm	\pm 0.5% (min: \pm 0.5 mm)
SLA / DLP	0.5 mm	25 - 100 μ m	150 x 75 x 50 cm	\pm 0.5% (min: \pm 0.1 mm)
SLS / MJF	0.7 mm	80 - 120 μ m	75 x 55 x 55 cm	\pm 0.3% (min: \pm 0.3 mm)
Material Jetting	1.0 mm	16 - 32 μ m	100 x 80 x 50 cm	\pm 0.1% (min: \pm 0.05 mm)
DMLS / SLM	0.4 mm	20 - 50 μ m	50 x 28 x 36 cm	\pm 0.1 mm
Binder Jetting	2.0 mm	50 - 200 μ m	180 x 100 x 60 cm	\pm 0.2 - 0.3 mm

3D Printing Capabilities

Visit 3dhubs.com/manufacture for:

- Instant Pricing
- Design for Manufacturing Tools
- Custom orientation

Quality assurance

The Performance & Quality of all Manufacturing Partners is closely curated by 3D Hubs.

ISO 9001 certification and Material Data Sheets are available upon request.

[Upload your file and get your instant quote →](#)

